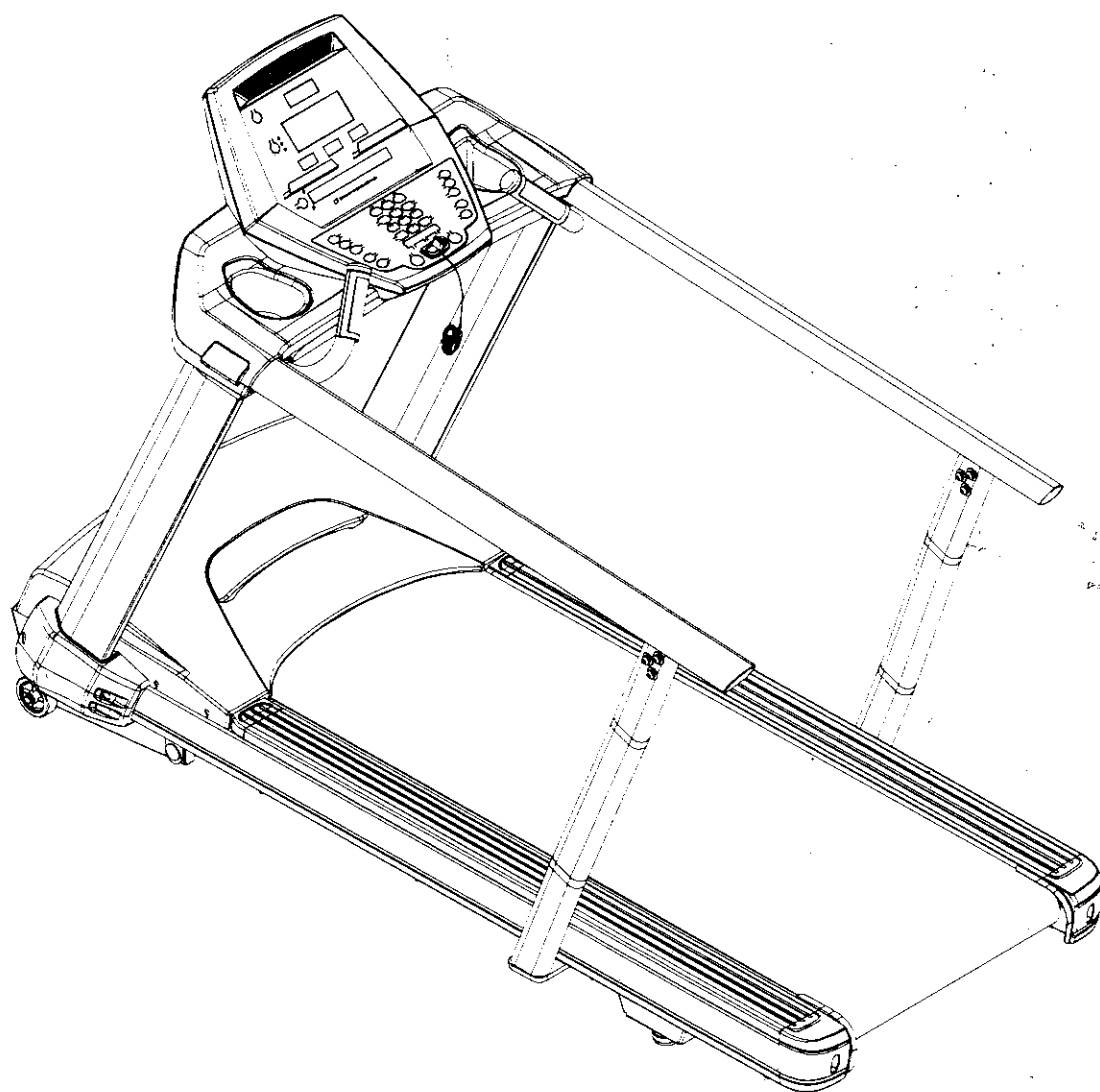
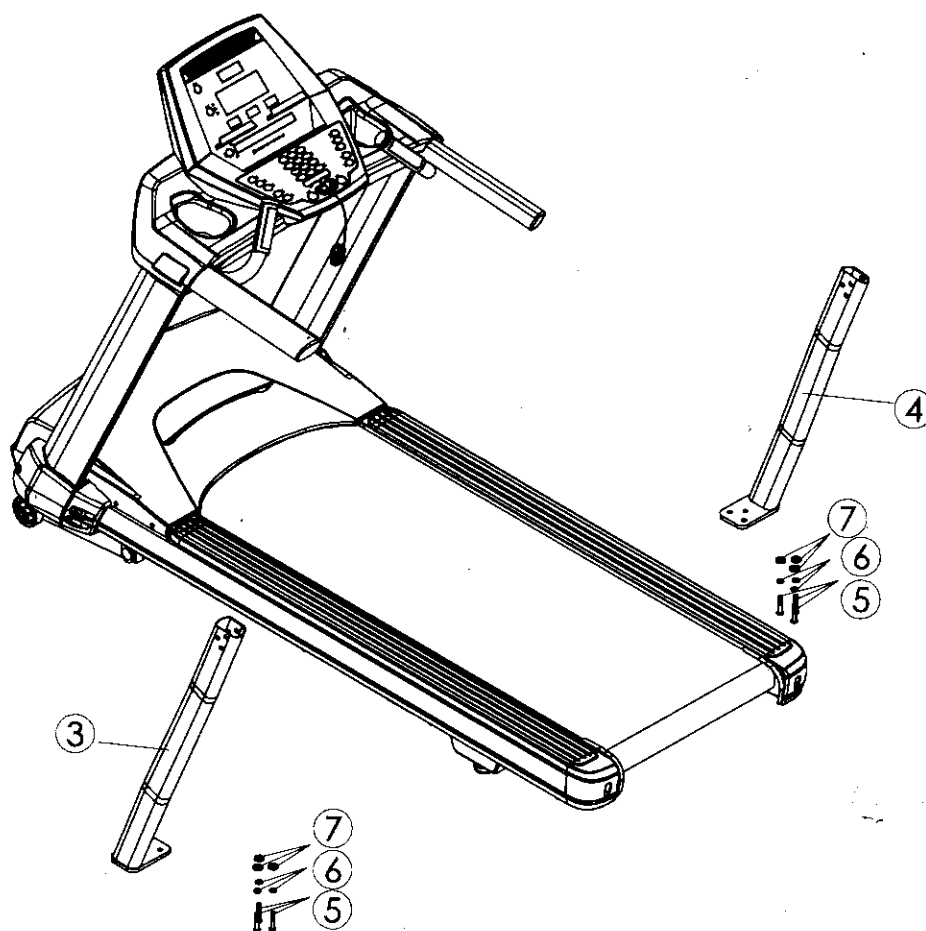


Extended Handrail Set



ASSEMBLY INSTRUCTIONS



STEP 1: Handrail Upright Tubes

1. Attach the right handrail upright tube (4) to the underside of the treadmill frame with three button head socket bolts (5), three split washers (6) and three flat washers (7). Do not fully tighten these yet. Repeat on the left side (3).

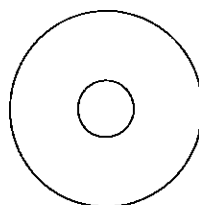
HARDWARE



#5. M8 x 20L
Button Head
Socket Bolt (6 pcs)

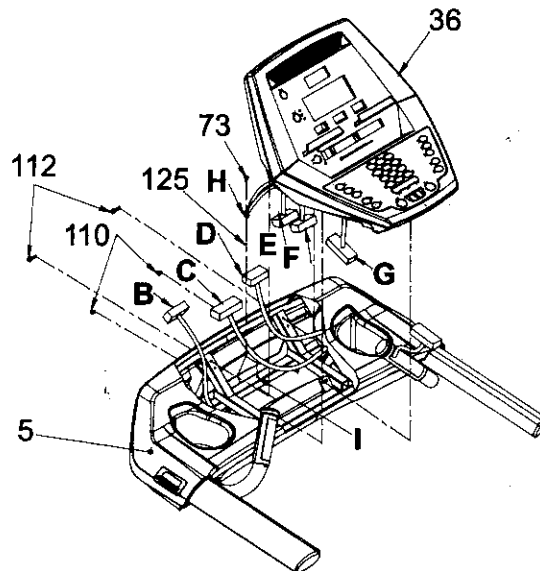


#6. Ø8.5
Split Washer
(6 pcs)



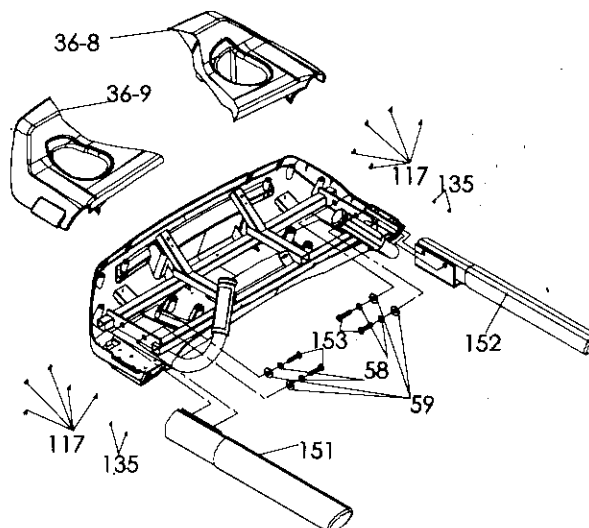
#7. Ø 3/8"
Flat Washer
(6 pcs)

ADD02-R4_1406B



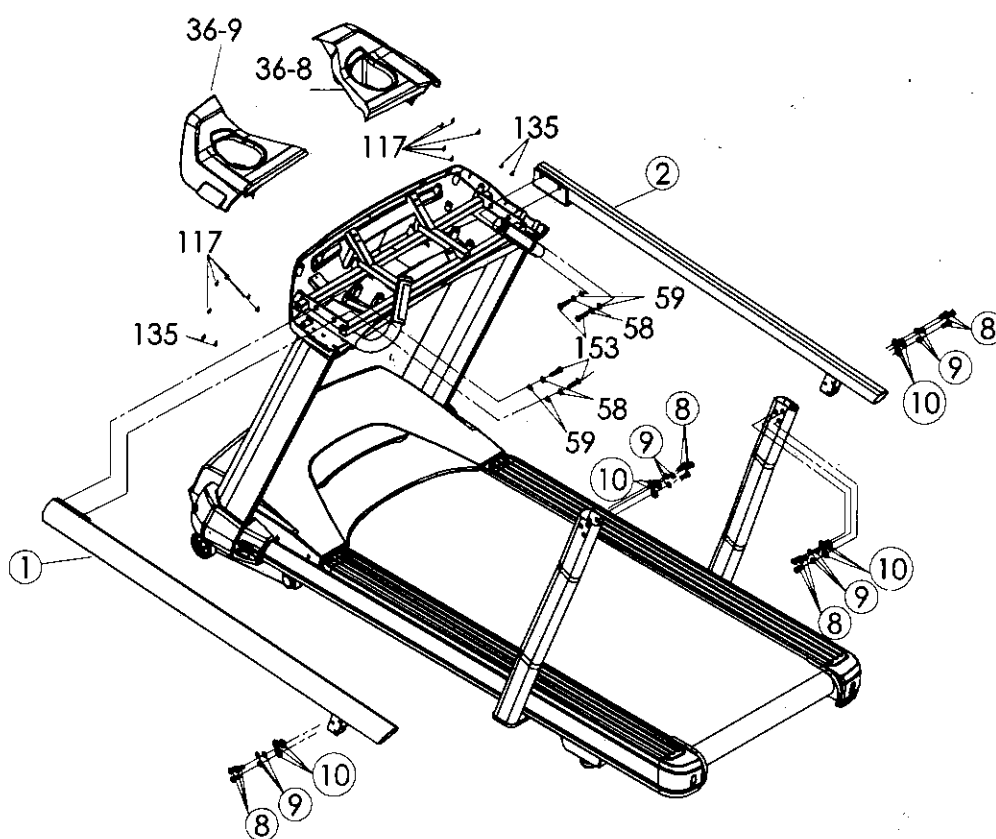
STEP 2: Console

1. Remove the console (36) from the frame (5) by taking out the two screws (112) in the upper set of holes and the two screws (110) in the lower set of holes.
2. Disassemble the ground cable (H) from I in the steel frame by removing the screw (73) and star washer (125).
3. Either have someone hold the loose console or set it on an object so you don't have to disconnect the cables.



STEP 3: Short Handrails Removal

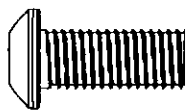
1. remove five (117) and two (135) self tapping screws from the bottom of each side. Set the beverage holder plastic trays aside (36-8 & 36-9).
2. Remove the two bolts (153) flat washers (59), and lock washers (58) that hold the short handrails (151 & 152) in place and either set them aside. You will need this hardware for the assembly of the long handrails.



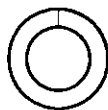
STEP 4: Extended Handrails

1. Place the right side handrail (2) onto the front and into the rear attachment sites. Secure the rear joint with three button head bolts (8), split washers (9) and flat washers (10) on the inside and outside. Repeat the process on the left side (1).
2. Attach the right front side (2) with the hardware that you removed when taking the short handrails off: Two bolts (153), lock washers (58) and flat washers (59). Repeat this process on the left side (1).
Firmly tighten all hardware that is loosely attached at each joint.
3. Reattach the right (36-8) and left (36-9) beverage holder plastics with five self tapping screws (117) and two self tapping screws (135) on each side.

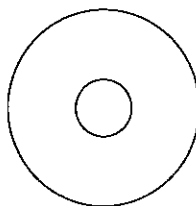
HARDWARE



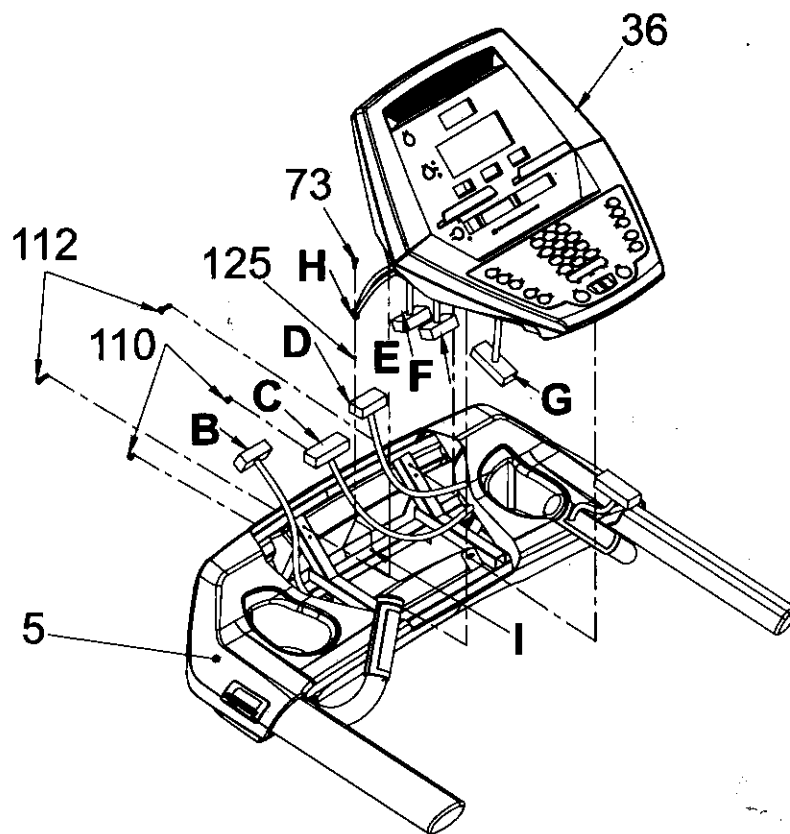
#8. 3/8" x 3/4"
Hex Head Bolt
(12 pcs)



#9. 3/8" Split
Washer
(12 pcs)



#7. Ø 3/8"
Flat Washer
(12 pcs)



STEP 5: Console

1. Reattach the ground wire to I of the frame (5) with one screw (73) and star washer (125). If you separated the other cables from one another, reattach cables G & C, D & F, and B & E. Secure the console (36) to the frame with two screws (112) in the upper set of holes and two screws (110) in the lower set of holes